

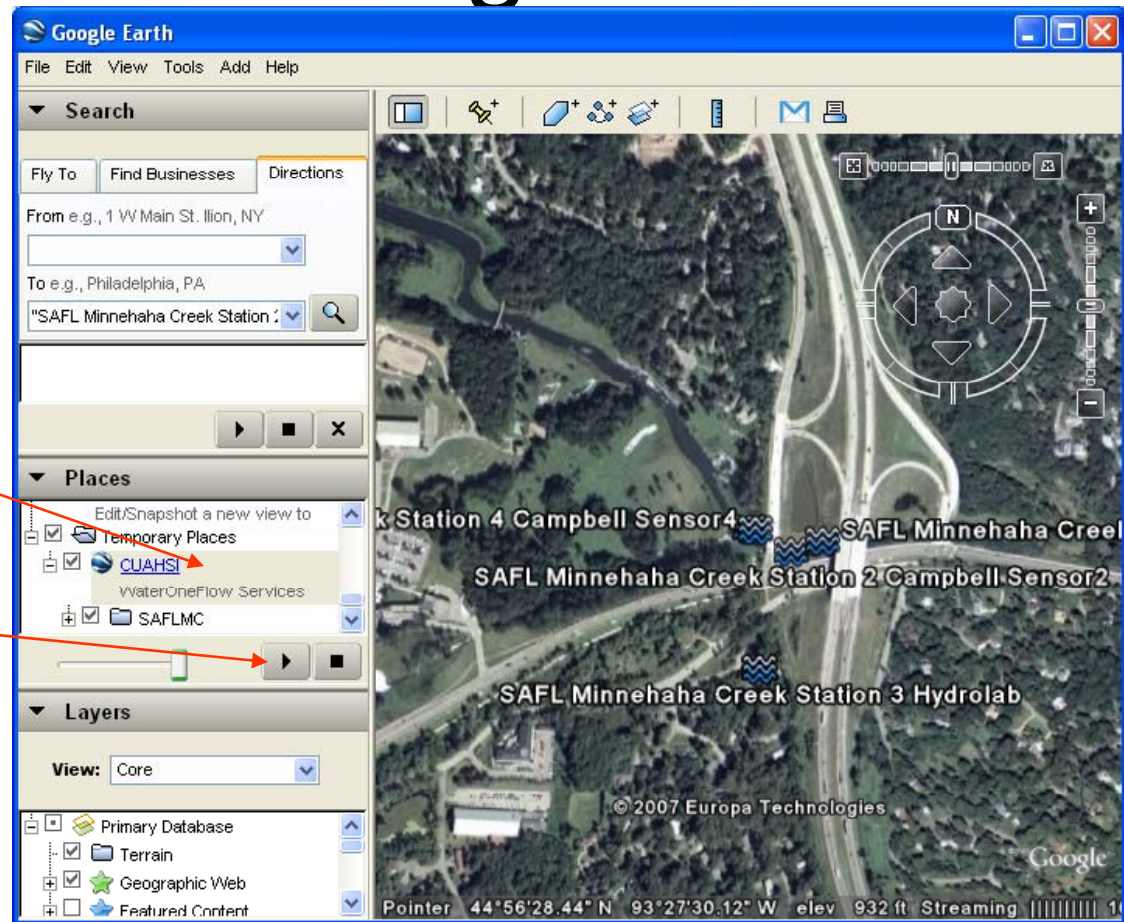
GetSites in Google Earth

Minnehaha Creek testbed
University of Minnesota

Highlight CUAHSI
WaterOneFlow services

Click on this arrow to zoom in

Save the file in your Places
before closing Google Earth
if you want to keep it

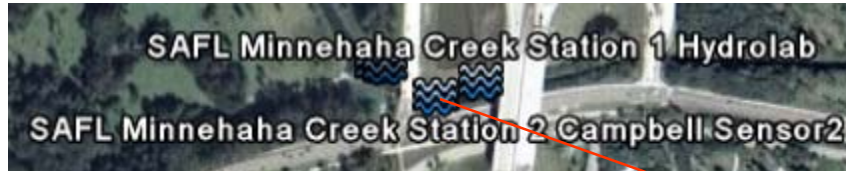


Accessed from <http://wron.net.au/DemosII/Modules/ODMKMLGateway.aspx>

Using the WSDL address: http://his.safl.umn.edu/SAFLMC/cuahsi_1_0.asmx?WSDL

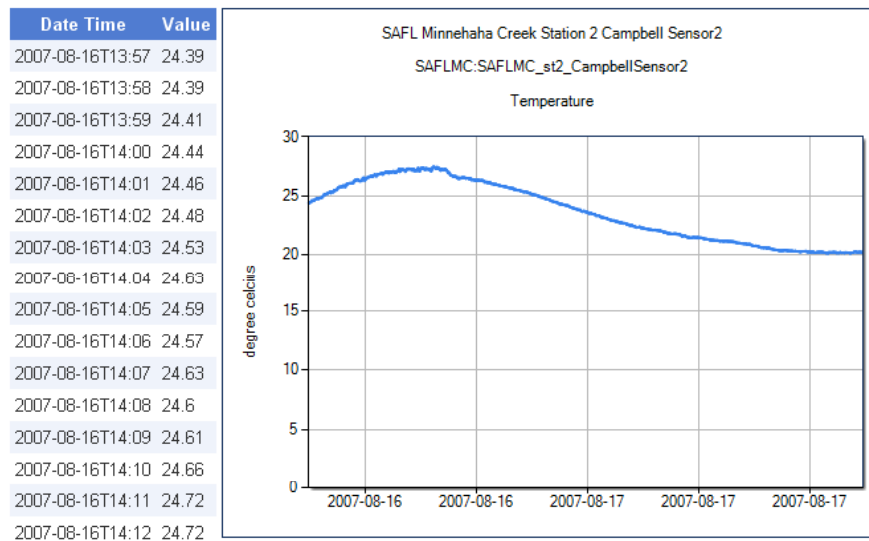
Courtesy of Peter Fitch, CSIRO, Canberra, Australia Peter.Fitch@csiro.au

Viewing metadata and data



Click on the site to view metadata

Click on Get Data to get the table and plot



SAFL Minnehaha Creek Station 2 Campbell Sensor2

WHITE BLACK GREY

SiteID: SAFLMC:SAFLMC_st2_CampbellSensor2

Series Information

Variable Name: Battery

- **General Category:** WaterQuality
- **Units:** volts
- **Value Count:** 1196
- **Begin Date:** 2007-08-16T13:57:00
- **End Date:** 2007-08-17T09:52:00

[Get Data](#)

Variable Name: Temperature

- **General Category:** WaterQuality
- **Units:** degree celsius
- **Value Count:** 1196
- **Begin Date:** 2007-08-16T13:57:00
- **End Date:** 2007-08-17T09:52:00

[Get Data](#)

Variable Name: Turbidity

- **General Category:** WaterQuality
- **Units:** nephelometric turbidity units
- **Value Count:** 1196
- **Begin Date:** 2007-08-16T13:57:00
- **End Date:** 2007-08-17T09:52:00

You need the latest version of Google Earth to get this plot!